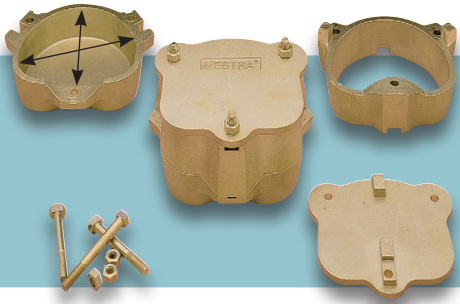


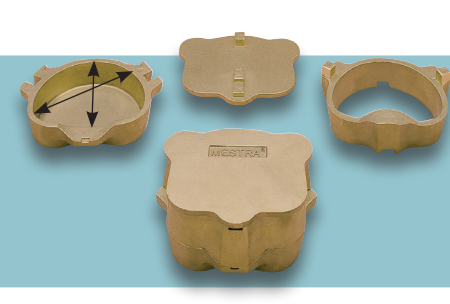
Mufla de tornillos

Ref. 020010 (mediano) Ref. 020020 (grande)



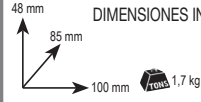
Mufla sin tornillos (para brida)

Ref. 020040 (mediano) Ref. 020050 (grande)



Mufla de tornillos (con expulsor)

Ref. 020060



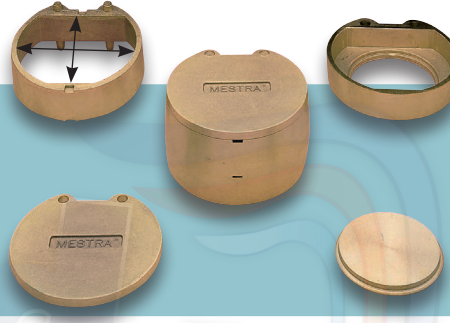
Mufla sin tornillos (con expulsor)

Ref. 020070



Mufla redonda

Ref. 020080



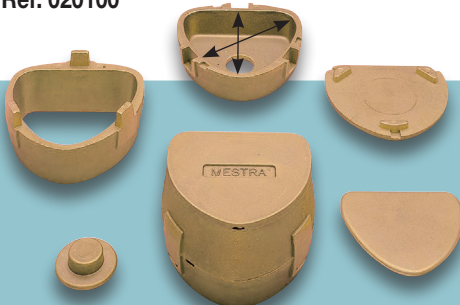
Mufla cuadrada

Ref. 020090



Mufla triangular

Ref. 020100



Mufla de tres pitones

(para brida) Ref. 020130



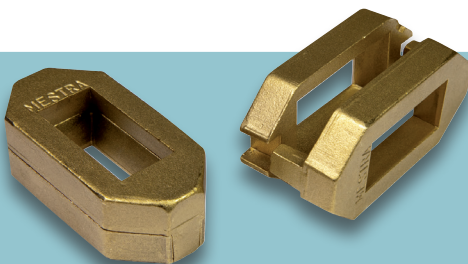
Mufla de dos pitones y cuñas

Ref. 020135



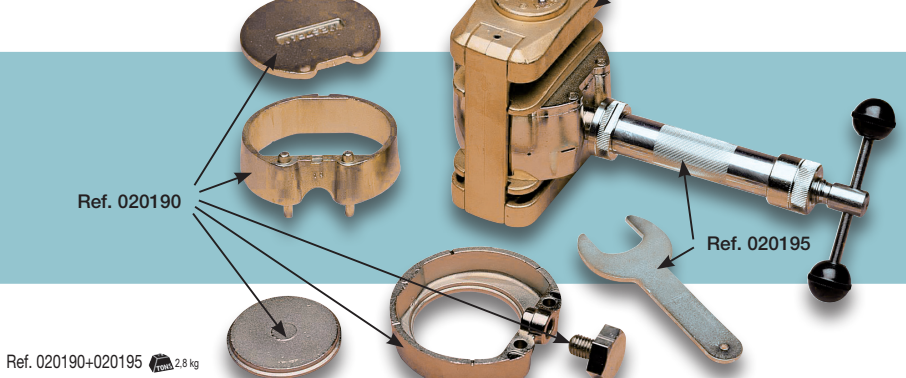
Mufla para puentes

Ref. 020140



Inyectora de resinas

Ref. 020195



Ref. 020190+020195 2,6 kg

Mufla (grande)

Ref. 020150 MATERIAL: ALUMINIO



0,6 kg

Mufla (grande)

Ref. 020151 MATERIAL: ALUMINIO y GOMA



0,6 kg

Mufla (pequeña)

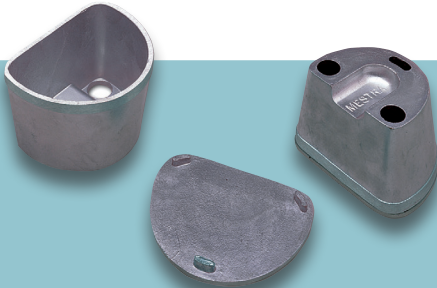
Ref. 020160 MATERIAL: ALUMINIO y GOMA



0,3 kg

Mufla (pequeña)

Ref. 020170 MATERIAL: ALUMINIO



0,3 kg

Mufla (pequeña)

Ref. 020171 MATERIAL: ALUMINIO y GOMA



0,4 kg

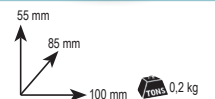
Muflas

Ref. 020180 MATERIALES: POLICARBONATO

Ref. 020185 MATERIALES: POLICARBONATO y GOMA



0,1 kg



0,2 kg

Muflas de duplicar (siliconas)

Ref. 020186 MATERIAL: POLICARBONATO



0,05 kg

Mufla de vertido (Resistente a alta temperatura)

MATERIAL: PLASTICO

Ref. 020202



0,24 kg

Mufla (para inyectar poliamidas)

Ref. 020210 MATERIAL: ALUMINIO



1,2 kg

Mufla para microondas

Ref. 020208

MATERIAL: Composite de alta resistencia



0,4 kg

Mufla para duplicar (con alginato)

Ref. 020205 y Ref. 020206 MATERIAL: METAL y GOMA



0,3 kg

Ref. 020205

Ref. 020206-01



Ref. 020206